

## CELST- 37 LED AREA LIGHT

### DESCRIPTION

CELST37 area/site family is available in two sizes as well as a variety of outputs allowing you to customize your lighting design to meet application requirements. Designed for sustained, long-term performance with advanced thermal management, an elegantly simple heat sink and industry leading surge protection, Anole brings the traditional shoebox practicality into the next generation of LED lighting.

### APPLICATIONS

Parking lot, Road way lighting, Park, Main road

### FEATURES

- Entry level 150lm/W for option. 100W / 150W / 200W / 300W, to replace 75W to 750W HID luminaires. Delivers up to 48,000 lumens.
- Full range of voltage 120-277V, 277-480VAC. Type III and type V light distributions that covers the parking lots, and streets.
- Photocell or Occupancy Sensor option dims product when space is not occupied. External glare shield and bird spikes available.
- 10 years warranty optional.

*\*Please consult us for details.*

### ELECTRICAL INFORMATION

MODEL NO	CELSST37-100/H-b-c-d	CELST37-150/H-b-c-d	CELSST37-200/H-b-c-d	CELSST37-300/H-b-c-d
	suffix "b" represent CCT and CRI, suffix "c" represent light distribution, suffix "d" =: "U" or "V" represent input voltage			
Power Consumption (±5%)	100 W	150 W	200 W	250 W
Power Supply	Philips			
Input Voltage	120-277VAC, 277-480VAC, 50/60 H			
Power Factor	>0.92			
Surge Protection	6kV line-line, 10kV line-earth			
Driver Type	Constant Current(CC)			
Intelligent Control	0-10V dimmable			

PROJECT:

SCHEDULE:

DATE:

PREPARE BY:

NOTES:



Rated Life Hours upto 50,000hrs

Warranty 5 Years



### ACCESSORIES

	OPTIC LENS
	SHARK PIR SENSOR ANT-6-4T
	ZHAGA SOCKET ZG-A00-01
	SHARK MICROWAVE SENSOR ANT-5-4T
	SHARK SENSOR CONTROLLER
	PHOTOCELL CONTROLLER

## OPTIC INFORMATION

LED TYPE	LED 3030				
<b>Luminous Flux (±5%)</b>	15500LM	22500LM	30000LM	37200LM	45000LM
<b>Efficacy (±5%)</b>	150lm/w				
<b>Color Temperature</b>	5000 K(4000K optional)				
<b>Color Rendering Index</b>	Ra70 (Ra80 optional)				
<b>Beam Angle</b>	TYPE III (R21601) / TYPE V(R21602)				
<b>UGR level</b>	/				

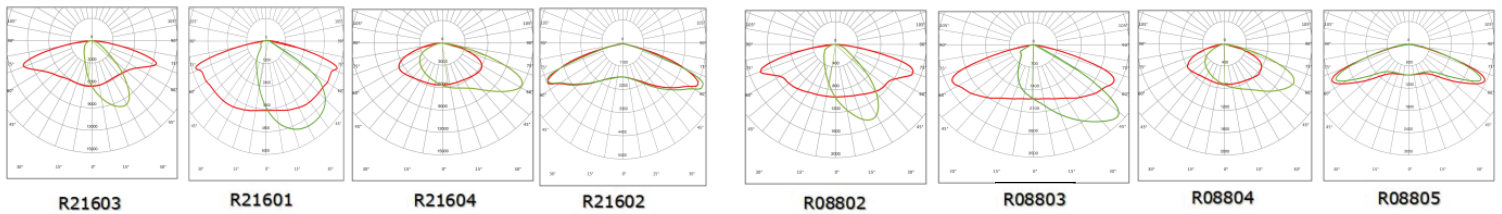
## DIMENSIONS AND MOUNT

<b>Product Dimension mm(inch)</b>	397x286x82mm (15.63"x11.25"x3.22")		625x303x82mm (24.61"x11.93"x3.22")	
<b>Luminaire Net Weight</b>	4.75±0.3kg (10.47±0.66Lbs)	4.75±0.3kg (10.47±0.66Lbs)	6.98±0.3kg (15.39±0.66Lbs)	7.59±0.3kg (16.73±0.66Lbs)
<b>Export Carton Size mm(inch)</b>	495×390×215mm (19.48"x15.35"x8.46")		710×390×215mm (27.95"x15.35"x8.46")	
<b>Gross Weight</b>	5.54 ± 0.3kg (12.21±0.66Lbs)	5.65±0.3kg (12.46±0.66Lbs)	8.08 ±0.3kg (17.82±0.66Lbs)	8.69 ±0.3kg (19.16±0.66Lbs)
<b>Mounting Option</b>	Square /Round Pole Mount			
<b>Material</b>	Aluminum Alloy			
	Polycarbonate Optical Lens			
<b>Finish</b>	Powder Coating			
<b>Fixture Color</b>	Black body			
<b>EPA</b>	1.47ft <sup>2</sup>		2.44ft <sup>2</sup>	
<b>IK Rating</b>	IK08			
<b>IP Rating</b>	IP65			

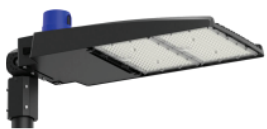
## LIFESPAN AND WARRANTY

<b>Operating Temperature</b>	-30°C to + 45°C
<b>Life Time of LED @Ta=25°C</b>	>36000hrs-L90
	>50000hrs-L70
<b>Warranty</b>	5 Years

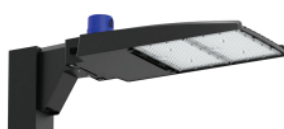
## PHOTOMETRY



## MOUNTING OPTIONS



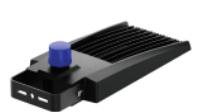
Slipfitter mount



Straight arm mount

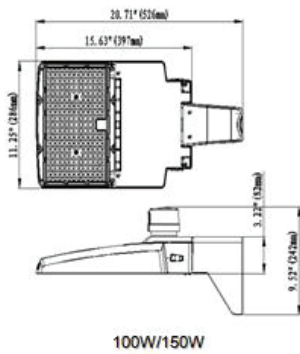


Round pole mount

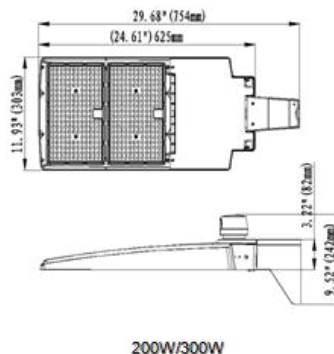


Yoke mount

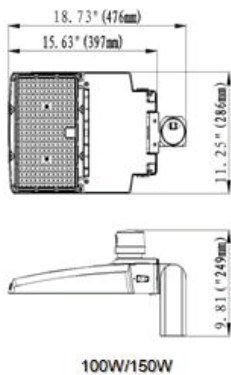
## DIMENSIONS



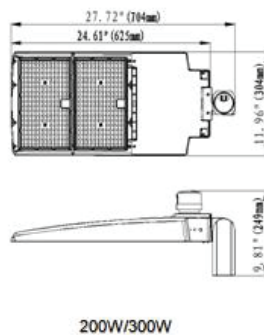
100W/150W



200W/300W



100W/150W



200W/300W

## ACCESSORIES



**Optic lens**  
High transmittance PC materials,  
UV test approval.  
Code:R08803  
Code:R08805  
Code:R21601  
Code:R21602



**Arm mount**  
Excellent anti-corrosion  
Aluminum alloy material  
Built for round and square pole  
Code: BC-ST37-01



**Slipfitter mount**  
Excellent anti-corrosion  
Aluminum alloy material  
Built for 60mm Dia. pole  
Angle adjustable  
Code: BC-ST37-02



**Yoke Mount**  
SPCC materials with outdoor  
powder coating  
Angle adjustable  
Code:BC-ST37-03(30-60W)  
Code:BC-ST37-04(100-300W)



**Zhaga socket**  
ZG-A00-01



**Photocell controller**  
PS-A00-01



**Shark PIR sensor**  
ANT-6-4T



**Shark microwave sensor**  
ANT-5-4T  
Bi-level motion sensor



**Shark sensor controller**  
RC100  
Compatible with ANT-6-4T,  
ANT-5-4T