

PROJECT:	
SCHEDULE:	DATE:
PREPARED BY:	
NOTES:	

DESCRIPTION

CELS FLEX CEHB-09 LED Linear High Bay is the perfect alternative if you are looking for a high bay luminaire. Following the market trend, with its innovative design, the product is intended to replace traditional HID and fluorescent fixtures, including T5, T8 and metal halide fixtures, and at the same time provide better lighting solutions for industrial spaces.



Rated Life Hours upto 1,30,000
Warranty 5 Years

APPLICATIONS








Warehouse, Stadiums and Arenas, Hangers and High Ceiling Mount, Gym Lighting Etc.

FEATURES

- 100W/150W/200W/300W/400W.
- 155lm/W.
- Low UGR.
- IP66 IK10 rated.
- Specialized asymmetrical optic 40°/140° for aisle, workshop and warehouse.
- Smart control all in one, including PIR, Microwave motion sensor, photocell, Zigbee, and Emergency driver (optional).
- Pendant mounting, and pipe mounting for multiple installations.

**Please consult us for specific details.*

ACCESSORIES

	PLUG-AND-PLAY PIR SENSOR
	PLUG-AND-PLAY MICROWAVE MOTION
	MICROWAVE SENSOR
	SAFETY LINE
	±60DEG ROTATABLE BRACKET
	MOUNTING BRACKET
	OPTIC LENS

ELECTRICAL INFORMATION

MODEL NO	CEHB-09-100	CEHB-09-150	CEHB-09-200	CEHB-09-240	CEHB-09-300	CEHB-09-400	CEHB-09-480
Power Consumption (±5%)	100W	150W	200W	240W	300W	400W (±3%)	480W(±3%)
Power Supply	SOSEN						
Input Voltage	1000-277 VAC						
Power Factor	>0.91						
Surge Protection	6kV line-line, 10kV line-earth						
Driver Type	Constant Current(CC)						
Intelligent Control	Dimmable/DALI Control / ZigBee Control						
	Microwave sensor / PIR sensor						
Certification	CE, RoHS, SAA, CB, ENEC, ETL, DLC						

OPTIC INFORMATION

LED type	LED 3030						
Luminous Flux (±5%)	15500LM	23250LM	31000LM	37200LM	46500LM	62000LM	74400LM
Efficacy (±5%)	155LM/W (5000K Ra70)						
Color Temperature	5000K (3000K, 4000K optional)						
Color Rendering Index	Ra70 (Ra80 optional)						
Beam Angle	L04501, L00401, L00402, L00403, L04502						
UGR level	NA						

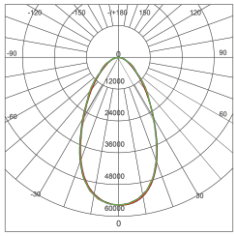
DIMENSIONS AND MOUNT

Product Dimension mm(inch)	340×325×60 (13.38"×12.8"×2.36")		680×325×60 (26.77"×12.8"×2.36")			1020×325×60 (40.16"×12.8"×2.36")	
Luminaire Net Weight	3.5±0.3kg (7.71±0.66Lbs)	3.7±0.3kg (8.15±0.66Lbs)	6.7±0.3kg (14.76±0.66Lbs)	6.8±0.3kg (14.98±0.66Lbs)	7.8±0.3kg (17.16±0.66Lbs)	10.7±0.3kg (23.65±0.66Lbs)	11.1±0.3kg (24.42±0.66Lbs)
Carton Size mm(inch)	420×385×135 (16.53"×15.16"×5.31")		760×385×135 (29.92"×15.16"×5.31")			1100×385×135 (43.31"×15.16"×5.31")	
Gross Weight	4.2±0.3kg (9.25±0.66Lbs)	4.4±0.3kg (9.69±0.66Lbs)	7.5±0.3kg (16.52±0.66Lbs)	7.6±0.3kg (16.72±0.66Lbs)	8.6±0.3kg (18.92±0.66Lbs)	11.65±0.3kg (25.63±0.66Lbs)	12±0.3kg (24.44±0.66Lbs)
Mounting Option	Suspension. Ceiling bracket & ±60deg rotatable bracket.						
Material	Housing	Aluminum Alloy					
	Optics	PC Lens					
Finish	Powder Coating						
Fixture Color	Silver Gray						
EPA	NA						
IK Rating	IK10						
IP Rating	IP66						

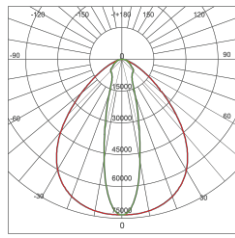
LIFESPAN AND WARRANTY

Operating Temperature	-30°C to +50°C (-22°F to 122°F)
Life Span of LED@Ta=25°C	40,000hrs-L90
	82,000hrs-L80
	131,000hrs-L70
Warranty	5 Years

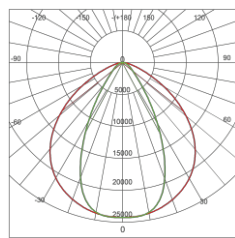
PHOTOMETRY



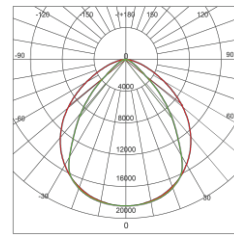
L04501



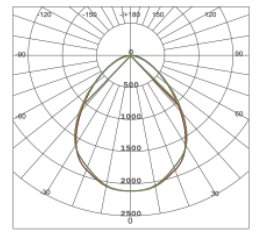
L00401



L00402

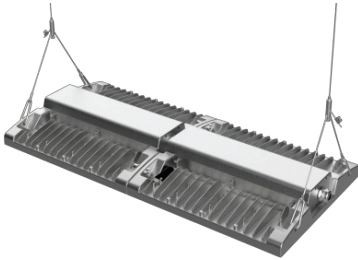


L00403

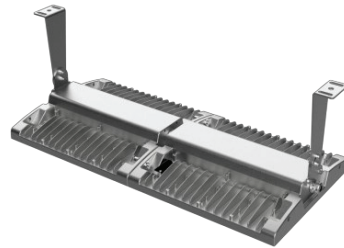


L04502

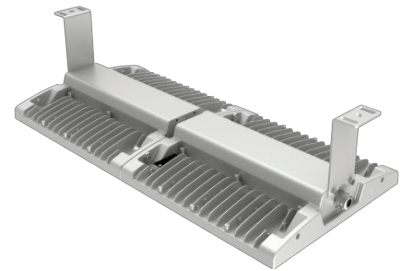
MOUNTING OPTIONS



Suspension mounting

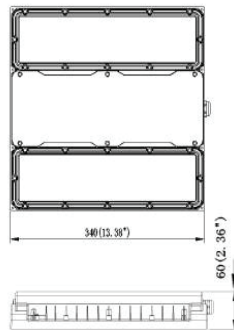


±60deg rotatable bracket mounting

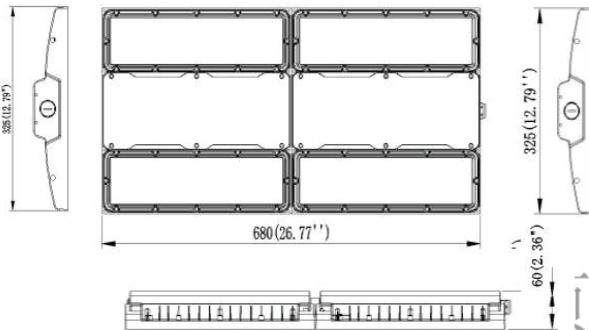


Ceiling bracket mounting

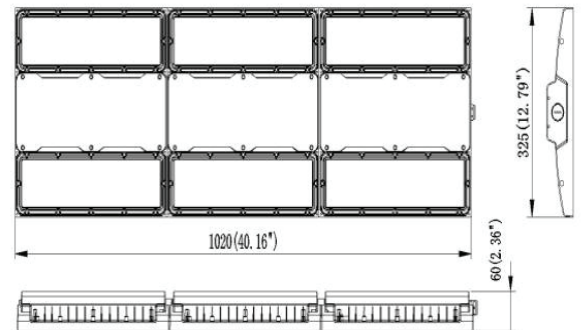
DIMENSIONS



100W/150W



200W/240W/300W



400W/480W

ACCESSORIES



Safety line



±60deg rotatable bracket



Mounting bracket



Optic lens



Plug-and-play PIR sensor



Plug-and-play microwave motion



Microwave sensor