

**CELST37****LED Area Light**

PROJECT:

SCHEDULE:

DATE:

PREPARE BY:

NOTES:

DESCRIPTION

CELST37 area/site family is available in two sizes as well as a variety of outputs allowing you to customize your lighting design to meet application requirements. Designed for sustained, long-term performance with advanced thermal management, an elegantly simple heat sink and industry leading surge protection, Anole brings the traditional shoebox practicality into the next generation of LED lighting.

APPLICATIONS

Parking lot, Road way lighting, Park, Main road

**Rated Life** Hours upto 50,000hrs**Warranty** 5 Years

FEATURES

- Entry level 150lm/W for option.
100W / 150W / 200W / 300W, to replace 75W to 750W HID luminaires.
Delivers up to 48,000 lumens.
- Full range of voltage 120-277V, 277-480VAC.
Type III and type V light distributions that covers the parking lots, and streets.
- Photocell or Occupancy Sensor option dims product when space is not occupied.
External glare shield and bird spikes available.
- 10 years warranty optional.

**Please consult us for details.*

ACCESSORIES



OPTIC LENS

SHARK
PIR SENSOR ANT-6-4TZHAGA
SOCKET ZG-A00-01SHARK
MICROWAVE SENSOR
ANT-5-4TSHARK
SENSOR CONTROLLER

PHOTOCELL CONTROLLER

ELECTRICAL INFORMATION

MODEL NO	CELSST37-100/H-b-c-d	CELSST37-150/H-b-c-d	CELSST37-200/H-b-c-d	CELSST37-300/H-b-c-d
	suffix "b" represent CCT and CRI, suffix "c" represent light distribution, suffix "d"="U" or "V" represent input voltage			
Power Consumption (±5%)	100 W	150 W	200 W	250 W
Power Supply	Philips			
Input Voltage	120-277VAC, 277-480VAC, 50/60 H			
Power Factor	>0.92			
Surge Protection	6kV line-line, 10kV line-earth			
Driver Type	Constant Current (CC)			
Intelligent Control	0-10V dimmable			

OPTIC INFORMATION

LED type	LED 3030				
Luminous Flux(±5%)	15500LM	22500LM	30000LM	37200LM	45000LM
Efficacy (±5%)	150lm/w				
Color Temperature	5000 K(4000K optional)				
Color Rendering Index	Ra70 (Ra80 optional)				
Beam Angle	TYPE III (R21601)/ TYPE IV (R21604)/TYPE V(R21602)/TYPE II (R21603)				
UGR level	/				

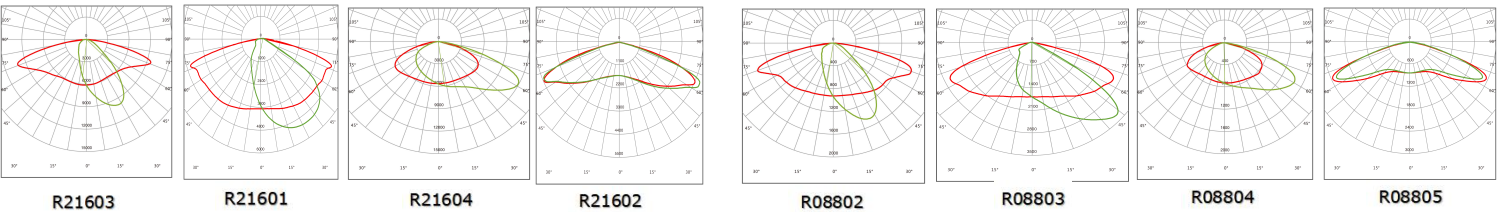
DIMENSIONS AND MOUNT

Product Dimension mm(inch)	397x286x82mm (15.63"x11.25"x3.22")		625x303x82mm (24.61"x11.93"x3.22")	
Luminaire Net Weight	4.75±0.3kg (10.47±0.66Lbs)	4.75±0.3kg (10.47±0.66Lbs)	6.98±0.3kg (15.39±0.66Lbs)	7.59±0.3kg (16.73±0.66Lbs)
Export Carton Size mm(inch)	495×390×215mm (19.48"x15.35"x8.46")		710×390×215mm (27.95"x15.35"x8.46")	
Gross Weight	5.54 ± 0.3kg (12.21±0.66Lbs)	5.65±0.3kg (12.46±0.66Lbs)	8.08 ±0.3kg (17.82±0.66Lbs)	8.69 ±0.3kg (19.16±0.66Lbs)
Mounting Option	Square /Round Pole Mount			
Material	Aluminum Alloy			
	Polycarbonate Optical Lens			
Finish	Powder Coating			
Fixture Color	Black body			
EPA	1.47ft²		2.44ft²	
IK Rating	IK08			
IP Rating	IP65			

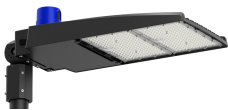
LIFESPAN AND WARRANTY

Operating Temperature	-30°C to + 45°C
Life Time of LED @Ta=25°C	>36000hrs-L90
	>50000hrs-L70
Warranty	5 Years

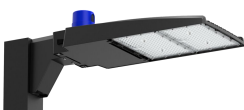
PHOTOMETRY



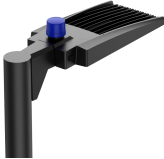
MOUNTING OPTIONS



Slipfitter mount



Straight arm mount

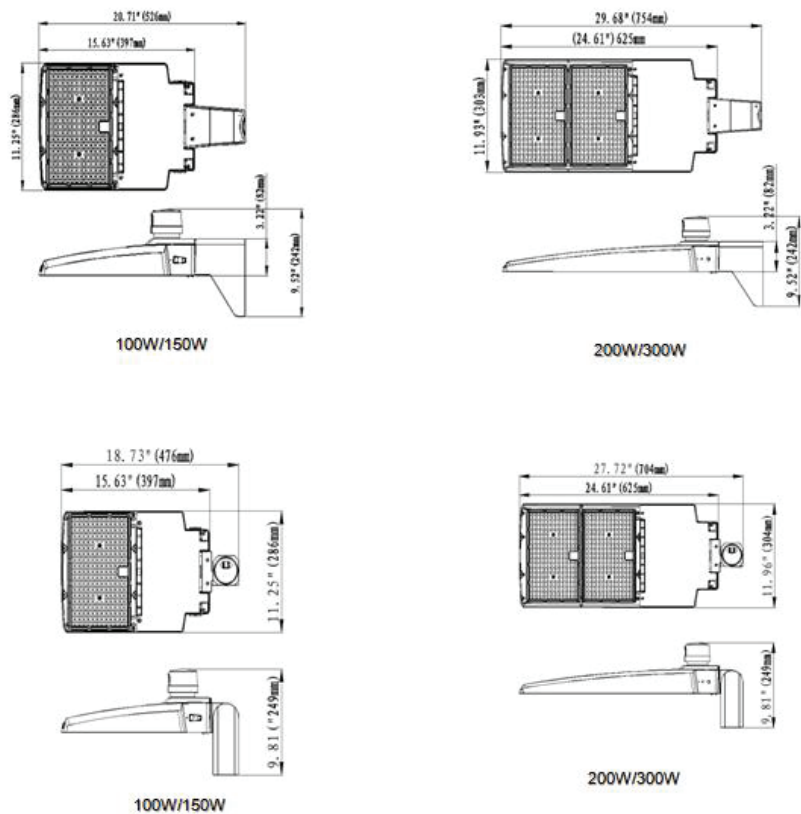


Round pole mount



Yoke mount

DIMENSIONS



ACCESSORIES



Optic lens
High transmittance PC materials,
UV test approval.
Code:R08803
Code:R08805
Code:R21601
Code:R21602



Arm mount
Excellent anti-corrosion
Aluminum alloy material
Built for round and square pole
Code: BC-ST37-01



Slipfitter mount
Excellent anti-corrosion
Aluminum alloy material
Built for 60mm Dia. pole
Angle adjustable
Code: BC-ST37-02



Yoke Mount
SPCC materials with outdoor
powder coating
Angle adjustable
Code:BC-ST37-03(30-60W)
Code:BC-ST37-04(100-300W)



Zhaga socket
ZG-A00-01



Photocell controller
PS-A00-01



Shark PIR sensor
ANT-6-4T



Shark microwave sensor
ANT-5-4T
Bi-level motion sensor



Shark sensor controller
RC100
Compatible with ANT-6-4T,
ANT-5-4T